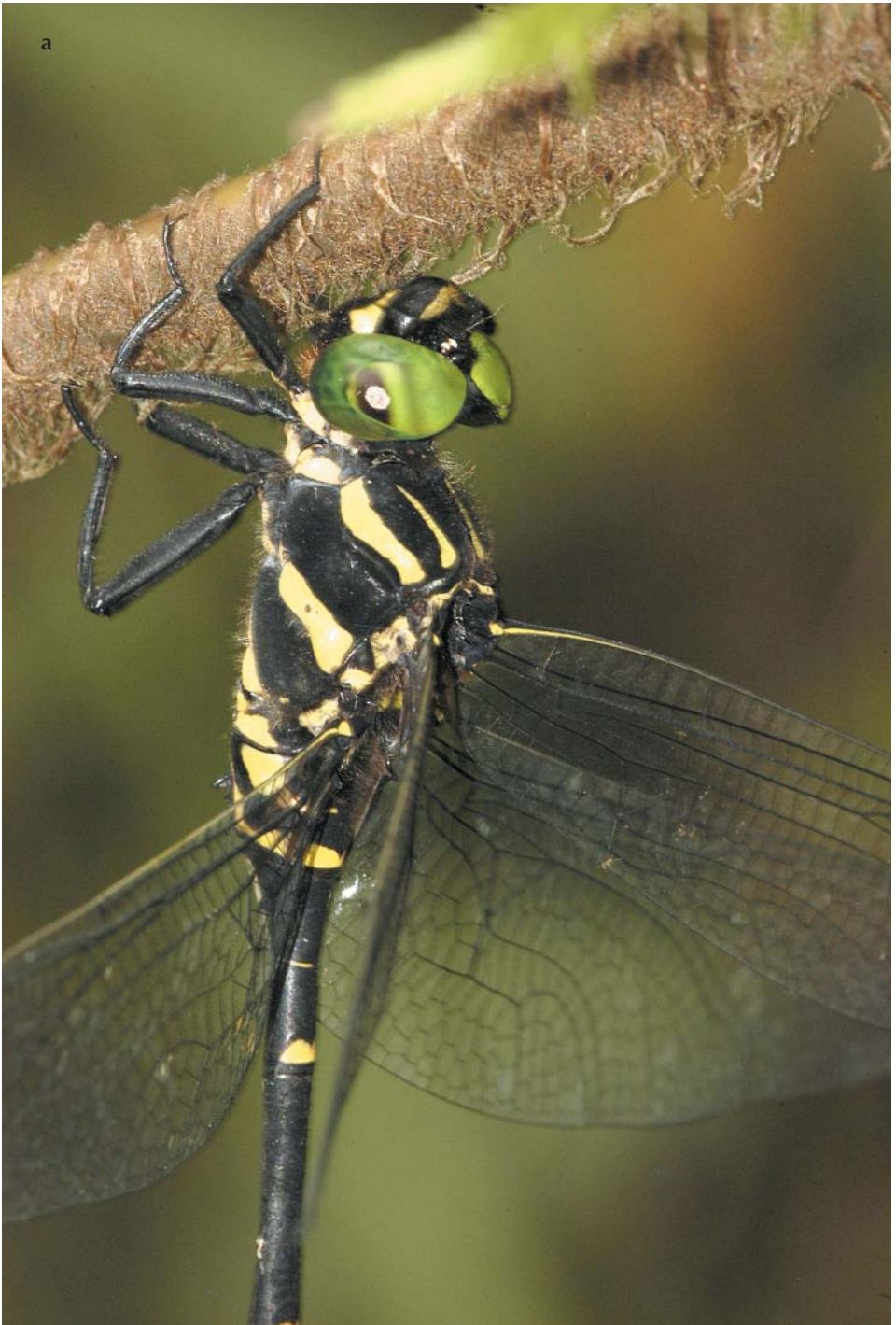


Colour plate I: Habitus of African Gynacanthini — (a) *Heliaeschna fuliginosa* male, Zika Forest near Entebbe, Uganda (= 'libyana') – note dark subcostal rays; (b) *H. ugandica* male, Zika Forest near Entebbe, Uganda – note blue lunules in eyes; tip of right cercus has broken off; (c) teneral *Gynacantha cylindrata* female with exuvia, Semliki National Park, Uganda – note distinctive black metastigma. Photos by Klaas-Douwe Dijkstra



Colour plate II: v. — (a) *Planaeschna suichangensis*, male; (b) *Chlorogomphus papilio*, type locality at Ruhija in Uganda, Kabale District, Bwindi Impenetrable National Park (alt. 2,100 m) – view of Mubwindi Swamp and the Virunga Volcanoes, with the collecting site in the forest to the right of the swamp. Scan and Photo by Keith Wilson



Colour plate III: *Chlorogomphus kitawankii* — Photo by Keith Wilson



Colour plate IV: *Macromia clio*, male — Photo by Keith Wilson